



*a community doing God's work on earth*

2011 St. Columba Parish Survey

November 2011

Dear St. Columba Parishioners:

On behalf of the Parish staff and the Parish Pastoral Council, thank you very much for taking time to participate in our recent Parish survey. Over 530 surveys were completed, with approximately 50% of those completed on-line either through the Parish website or in response to our e-mail asking parishioners to participate.

Below is a summary of the results of the survey for your review. We have much follow-up work to do to analyze these results and draw interpretations of what you have told us we are doing well and not so well. In addition, we received several hundred comments that we have begun to review – please be certain that all of this feedback is important and we are taking it very seriously.

You can expect follow-up communications from us with more detailed analysis and ideas about where adjustments should be considered to continue the growth and improvement of our Parish.

May God bless you,

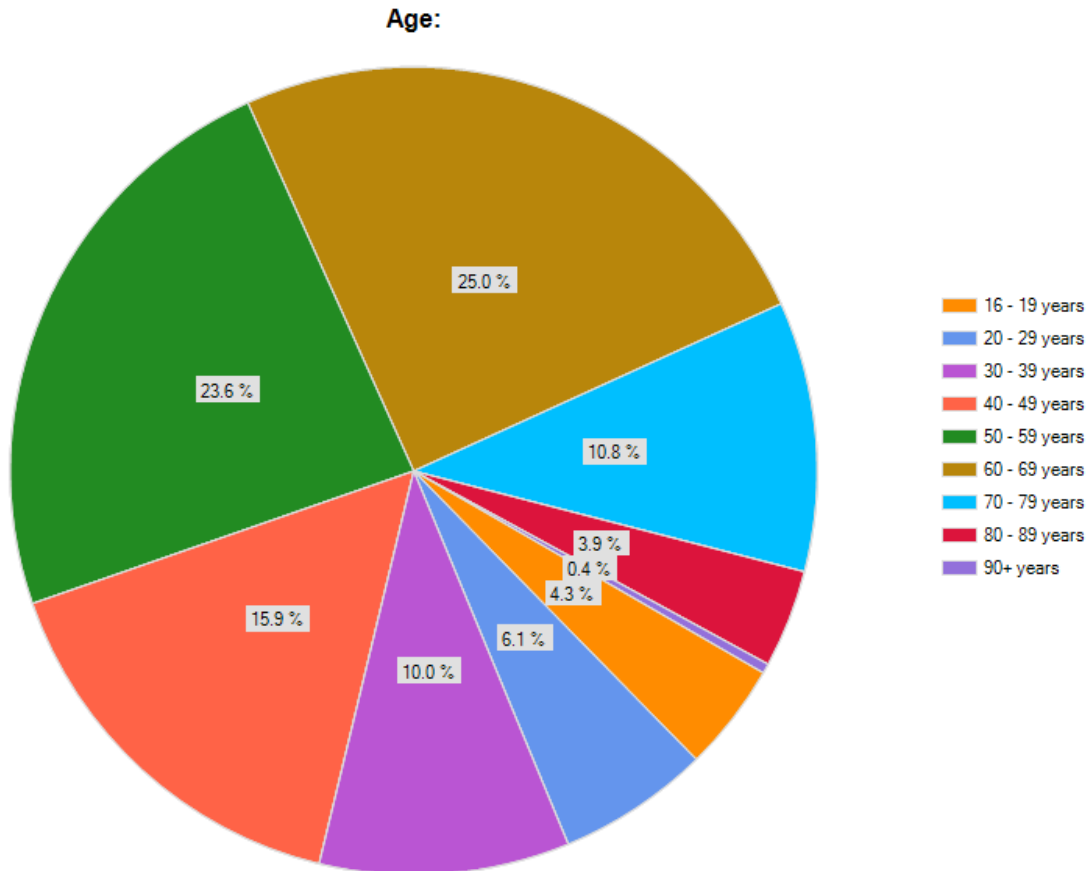
A handwritten signature in cursive script that reads "Fr. Jim Koenigsfeld". The signature is written in black ink on a light-colored background.

James F. Koenigsfeld, Pastor

## 2011 St. Columba Parish Survey

### Demographic Results

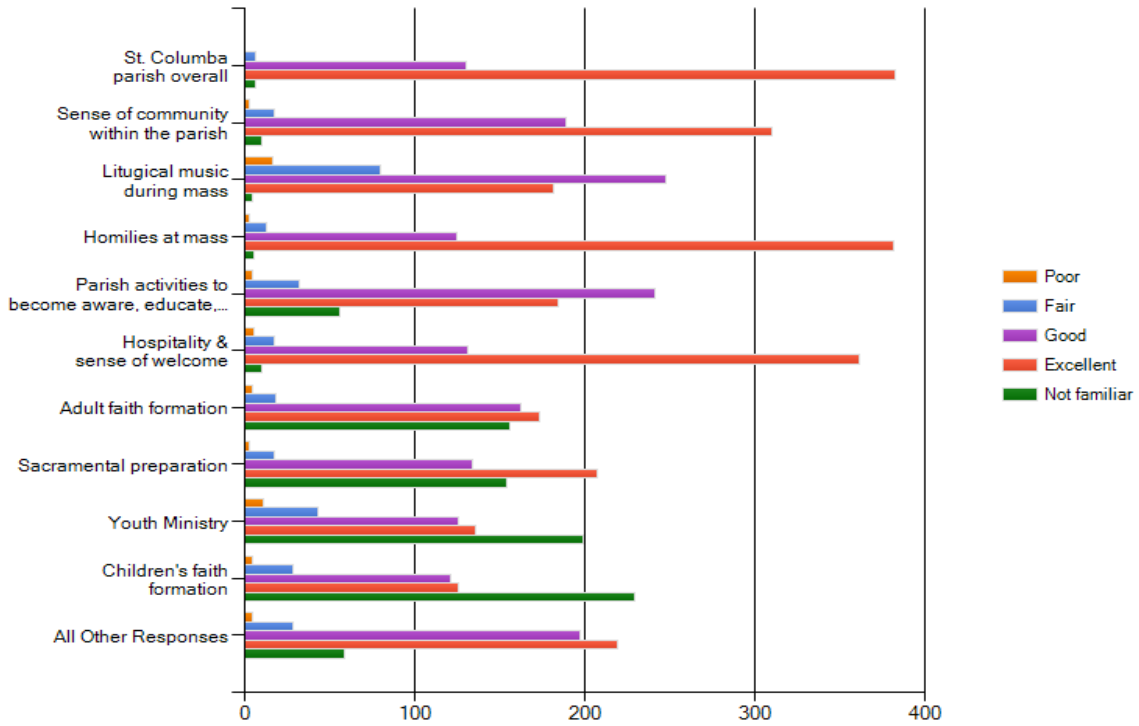
- 533 surveys were completed (as of October 11, 2011), 65% by females and 35% by males, 73% of whom are married.
- 47% of respondents have been part of the Parish for 10 years or longer. 8% do not consider themselves members of the Parish; 7% have been members for a year or less; 20% for 2-5 years; and 18% for 6-10 years.
- 40% attend the 9 a.m. Sunday Mass; 34% the Saturday Mass; 20% the Sunday 11:30 a.m. Mass and 5% the Fort Lewis College Mass.
- Respondents ranged in age from their teens to their nineties as depicted in the following chart:



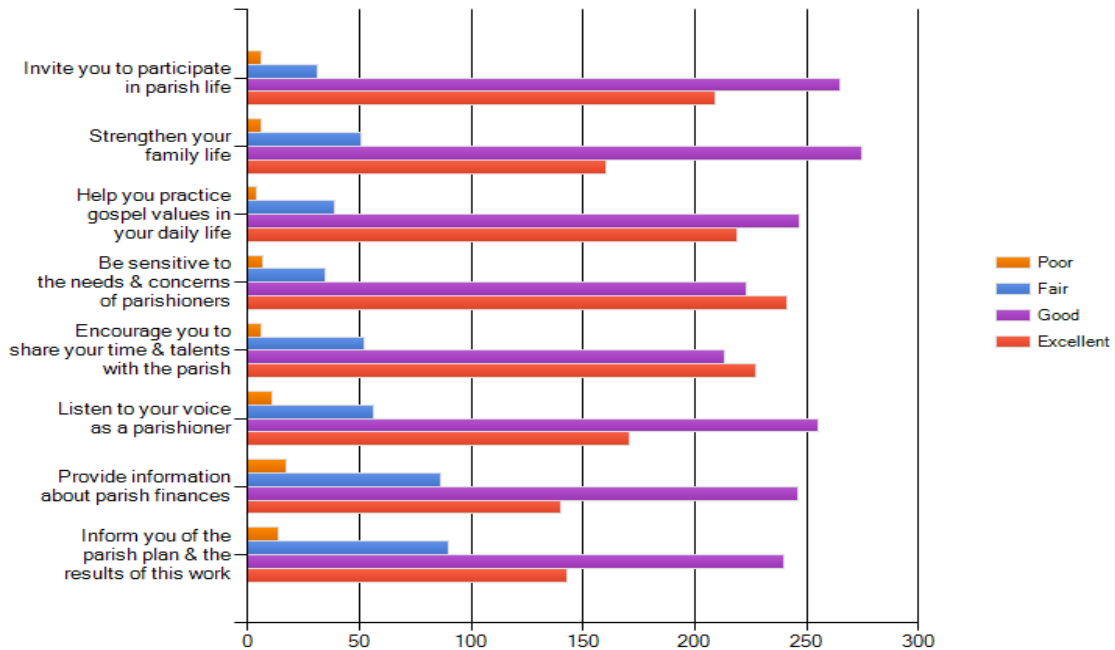
- 581 comments were entered in the three comment sections of the survey.

## Survey Question Results

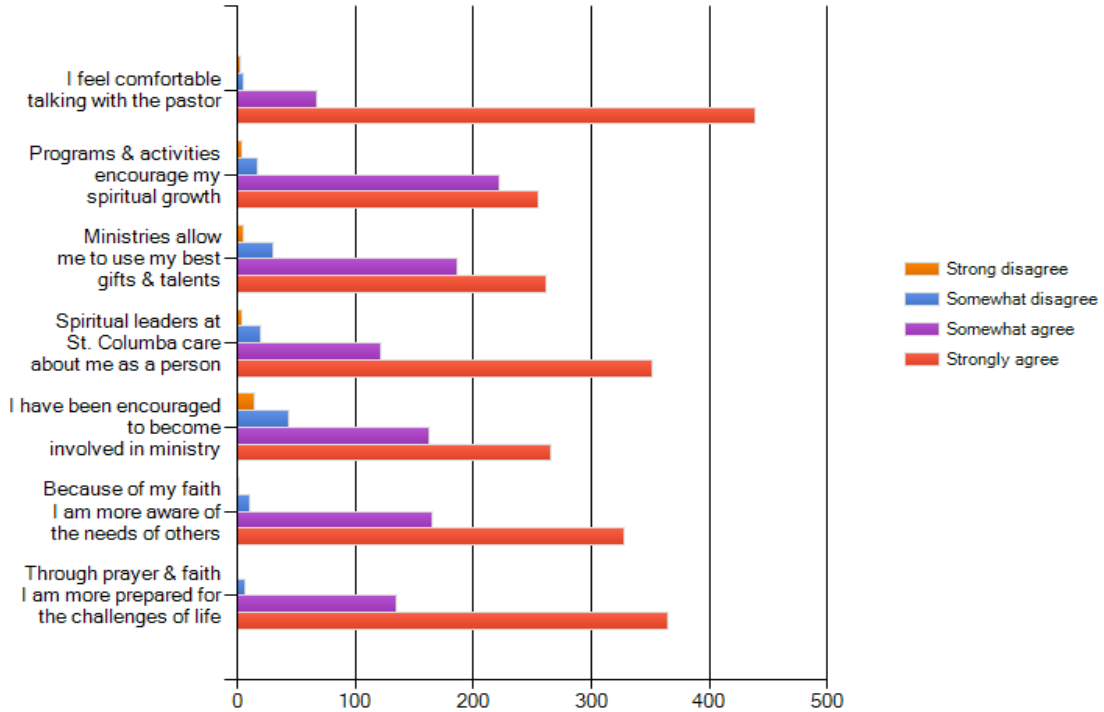
### How does St. Columba do in these general aspects of parish life?



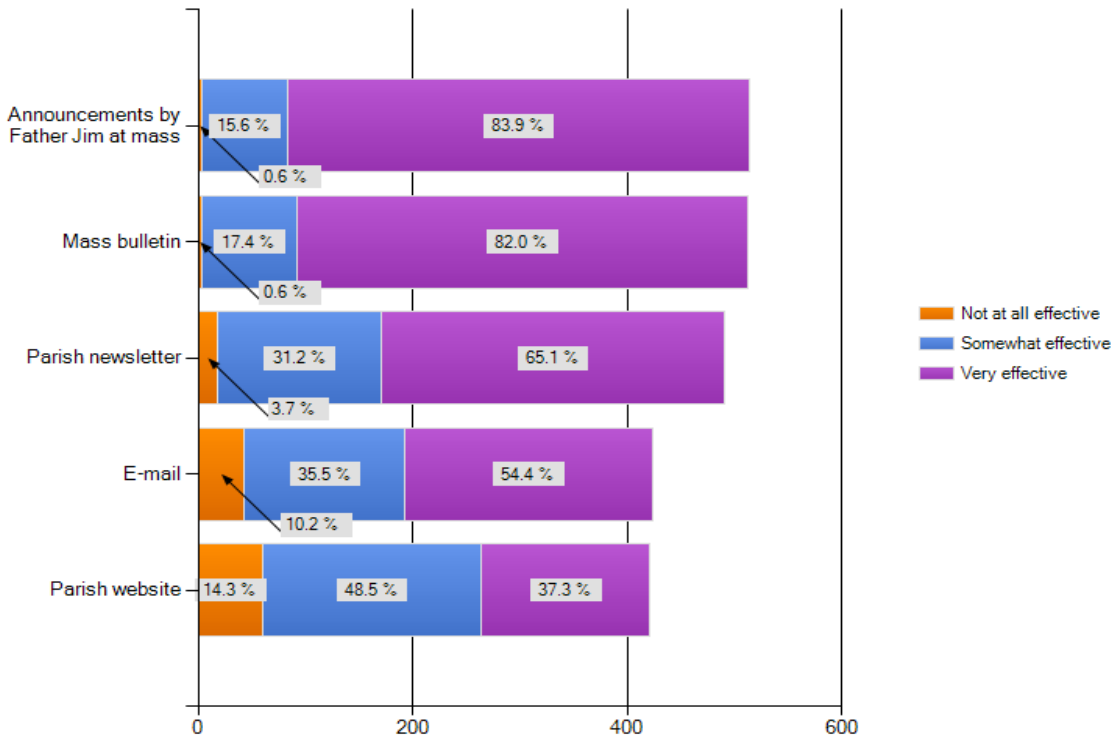
### Please evaluate parish efforts to:



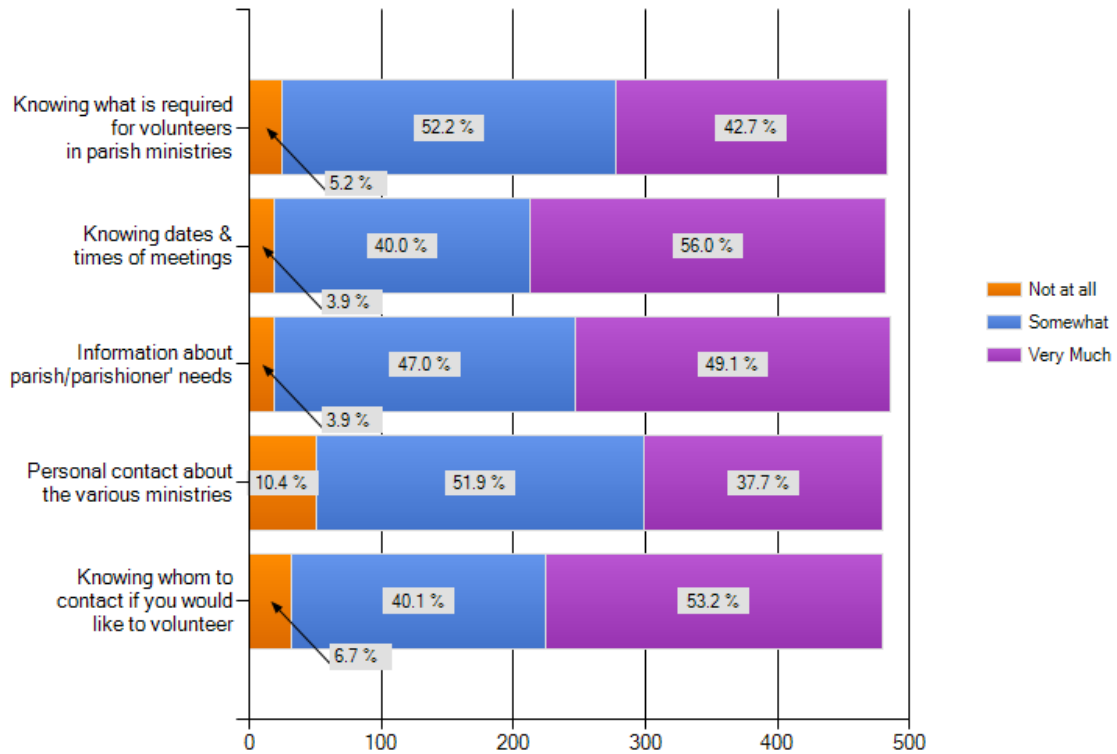
**Please respond regarding the support of St. Columba & your faith experience.**



**How effective are these ways of communicating parish news to you?**



**The vision of St. Columba Parish is "A community doing God's work on earth."  
How much have each of the following helped you to be more involved in our parish community?**



**How important are the following to you in making your decision to join a Catholic parish (any parish)?**

